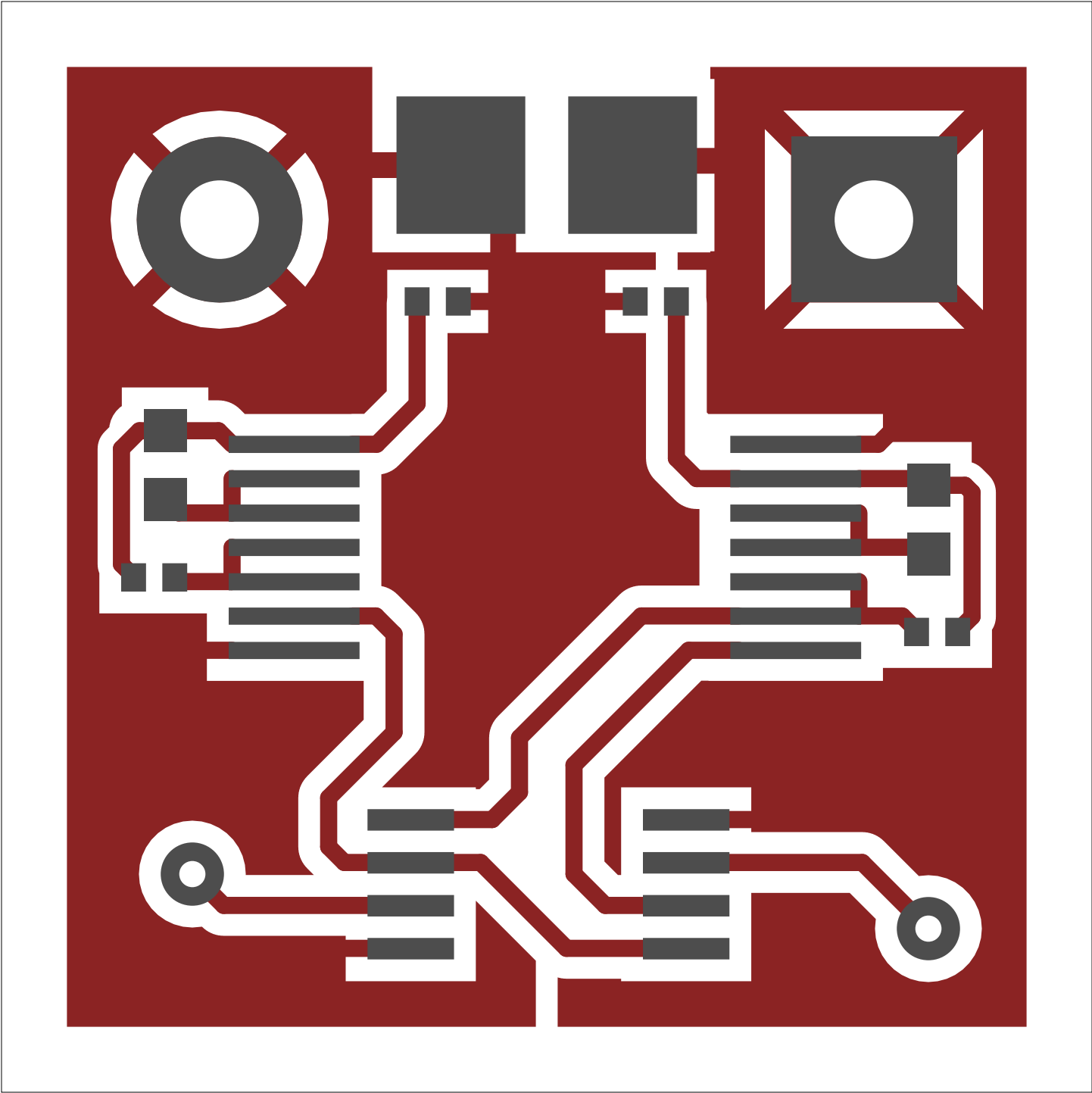
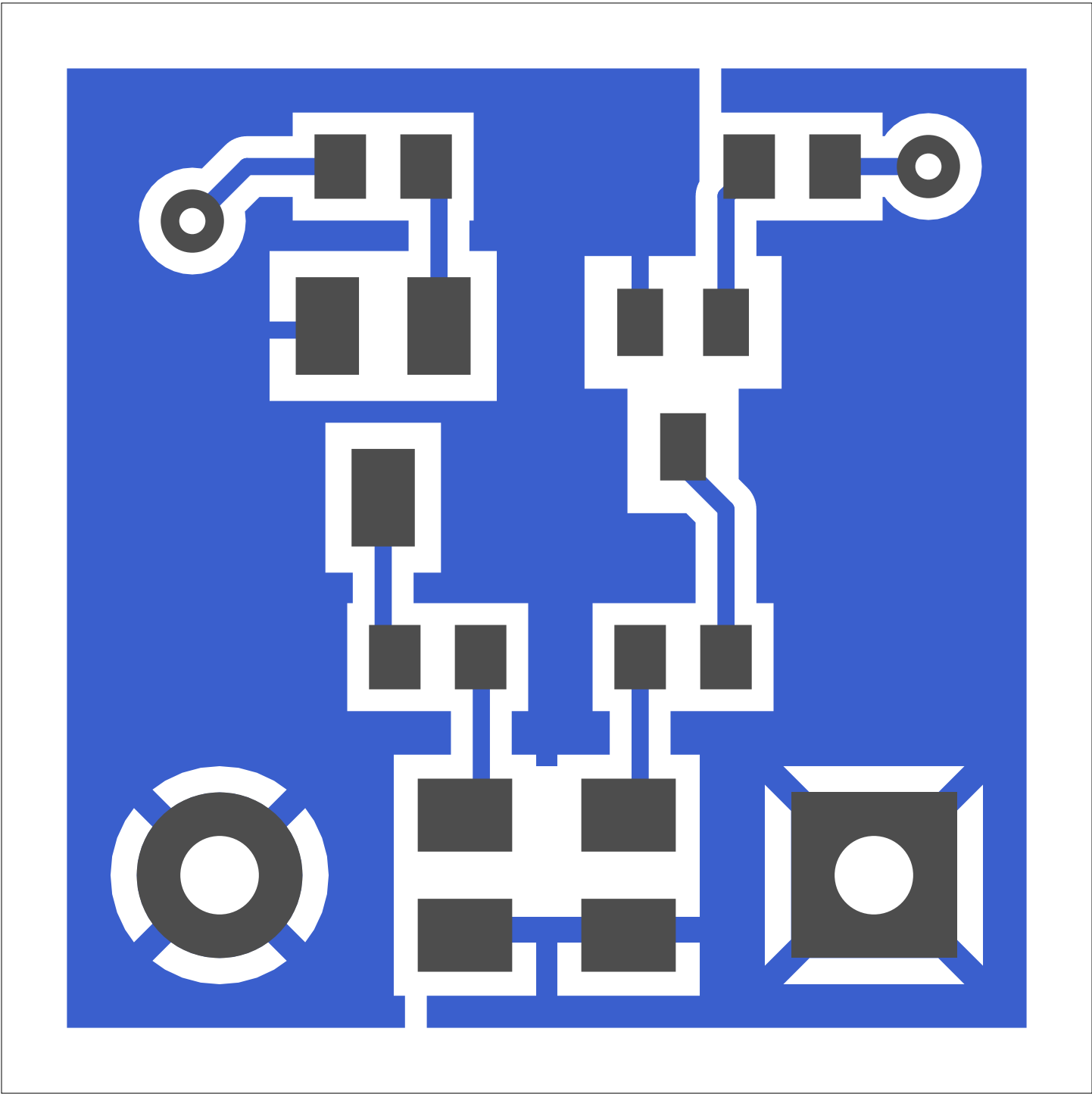


2. component
3. solder
4. componentmask
5. soldermask
6. plated-drill
7. topsilk
8. bottomsilk
9. bottompaste
10. toppaste
11. topassembly
12. bottomassembly
13. fab

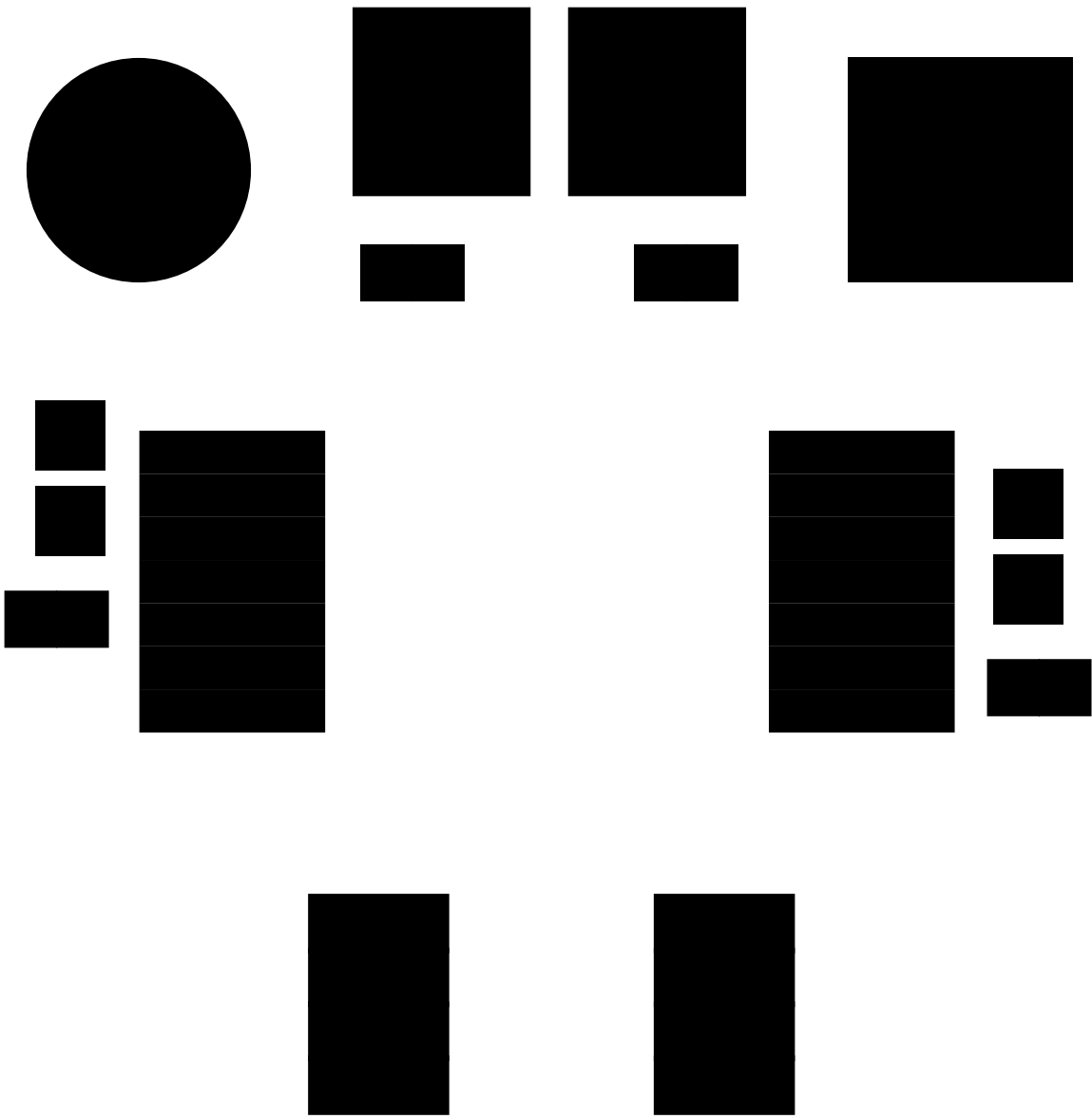
# Layer 01 Components

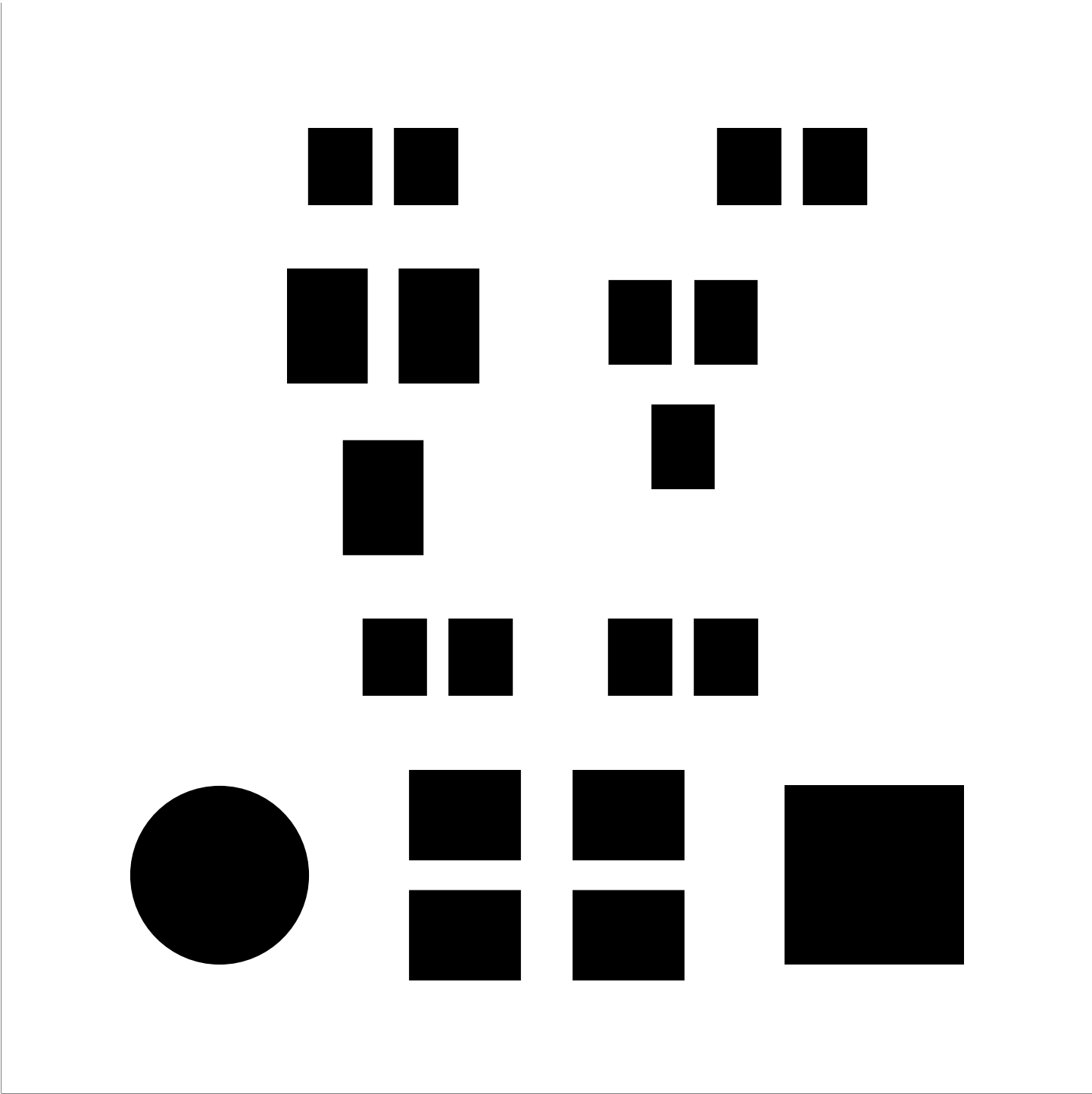




Γαλατσι οριζο

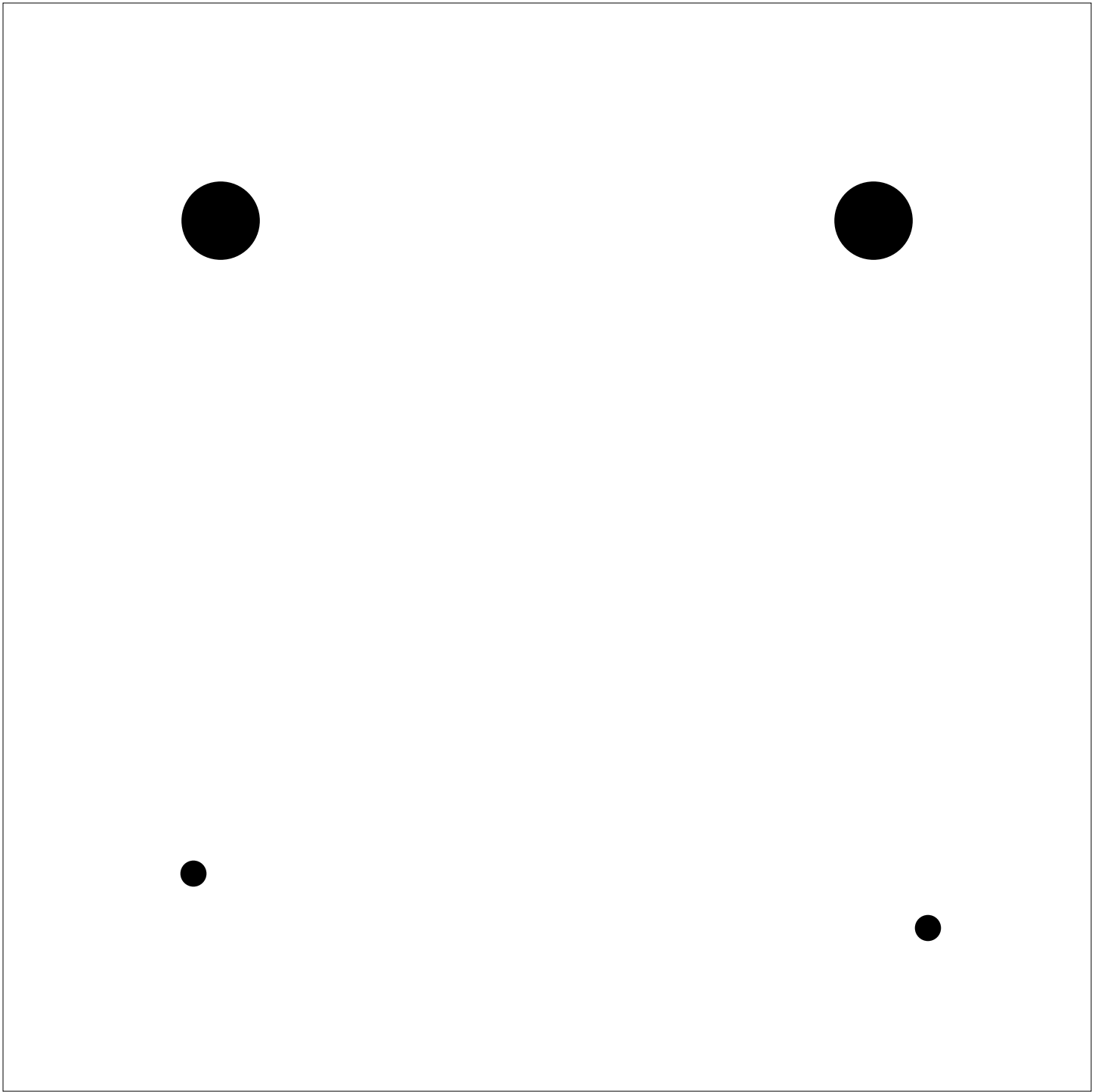
# Layer 01 Components



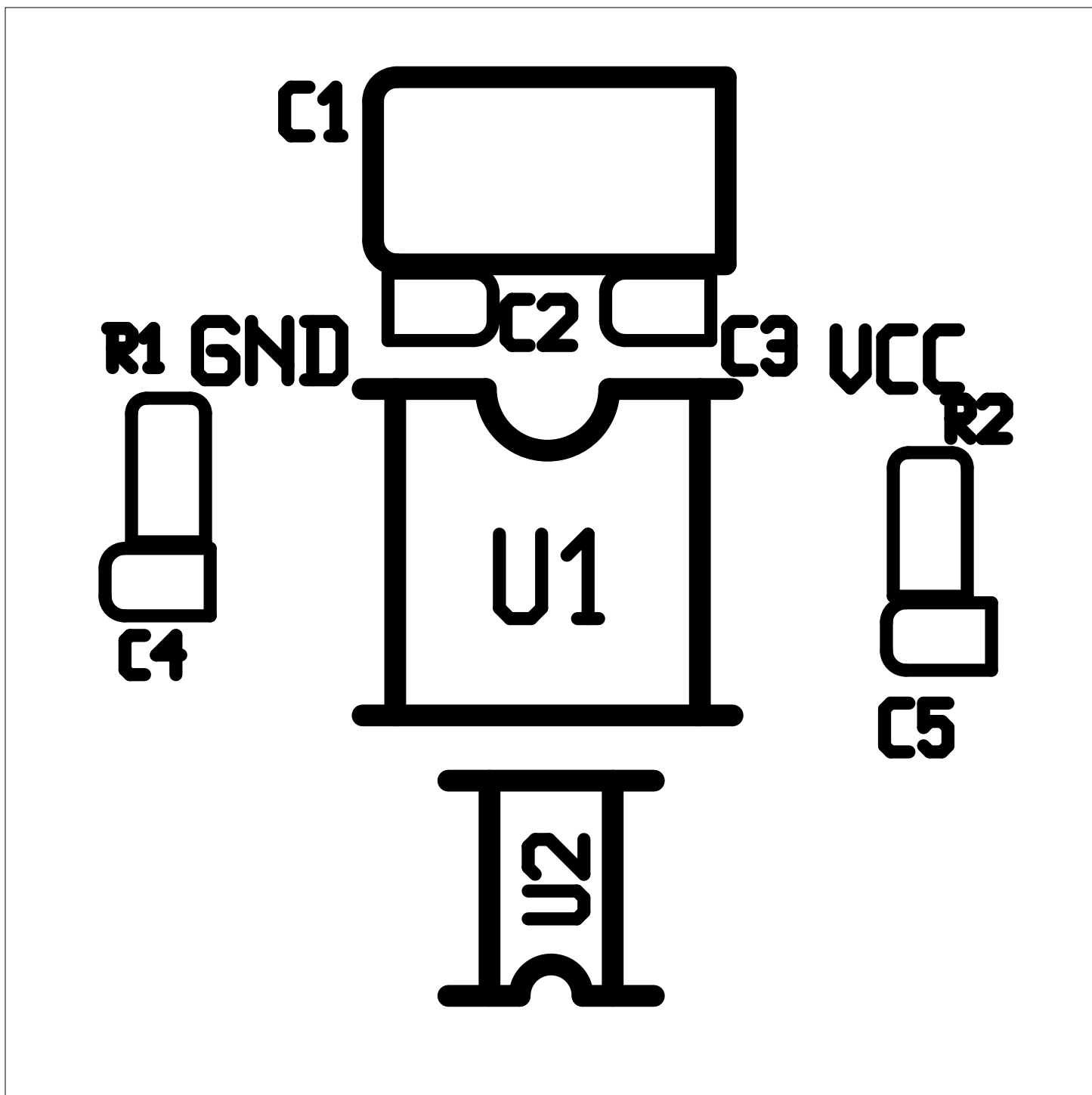


Γαλατσι ροιδαοι

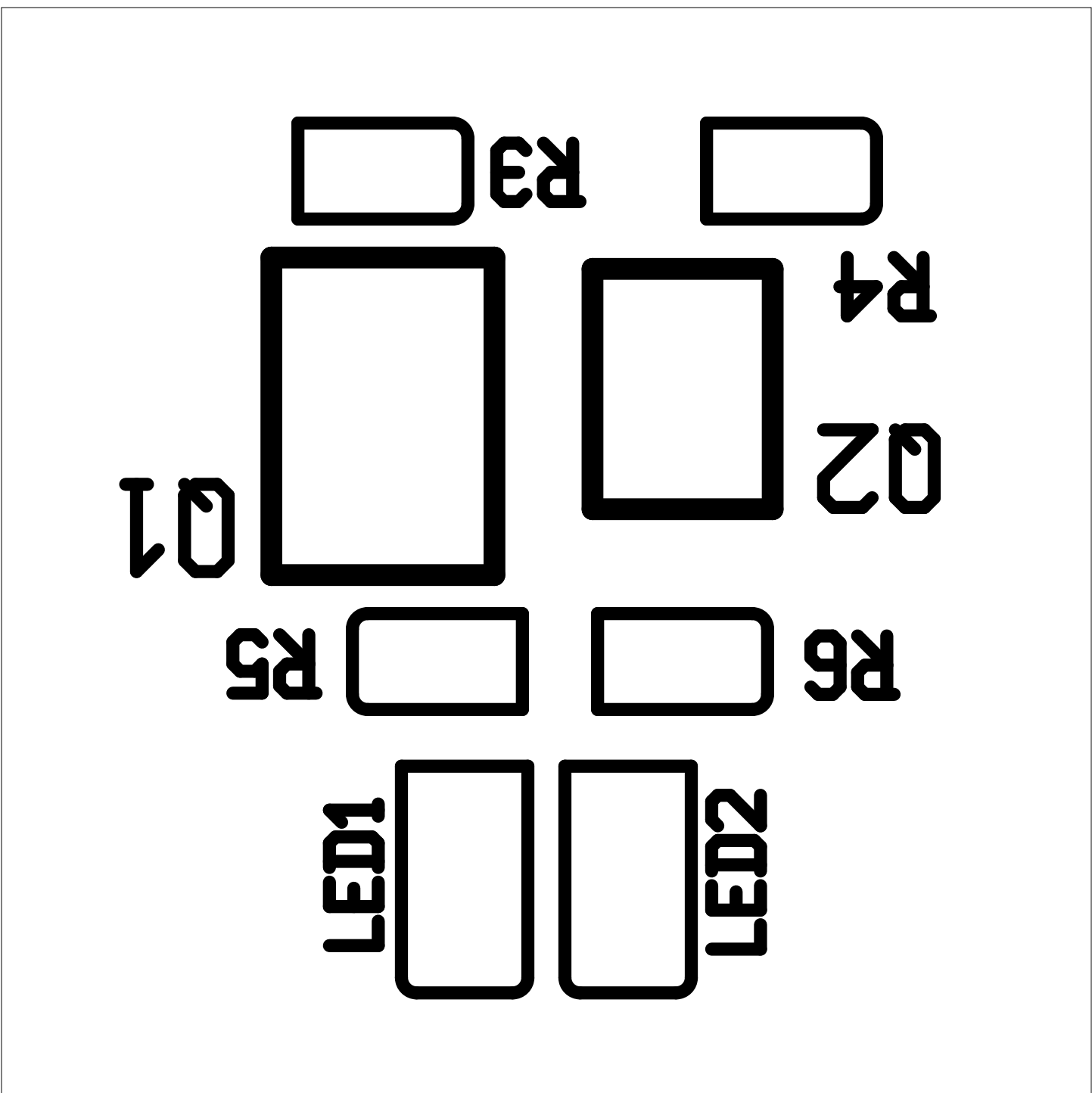
# Layer of plates



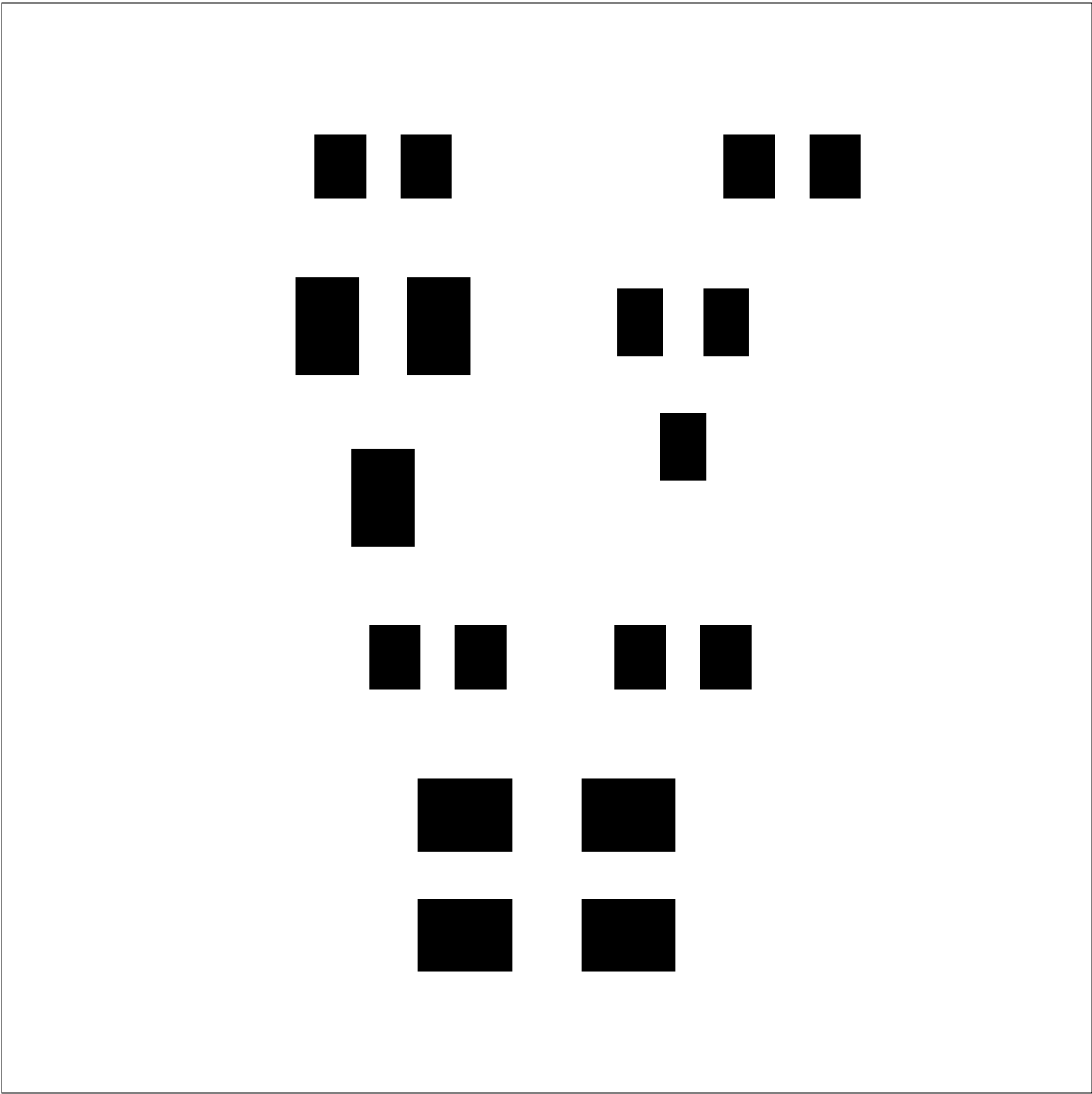
# Layer 01 - top



Board layout

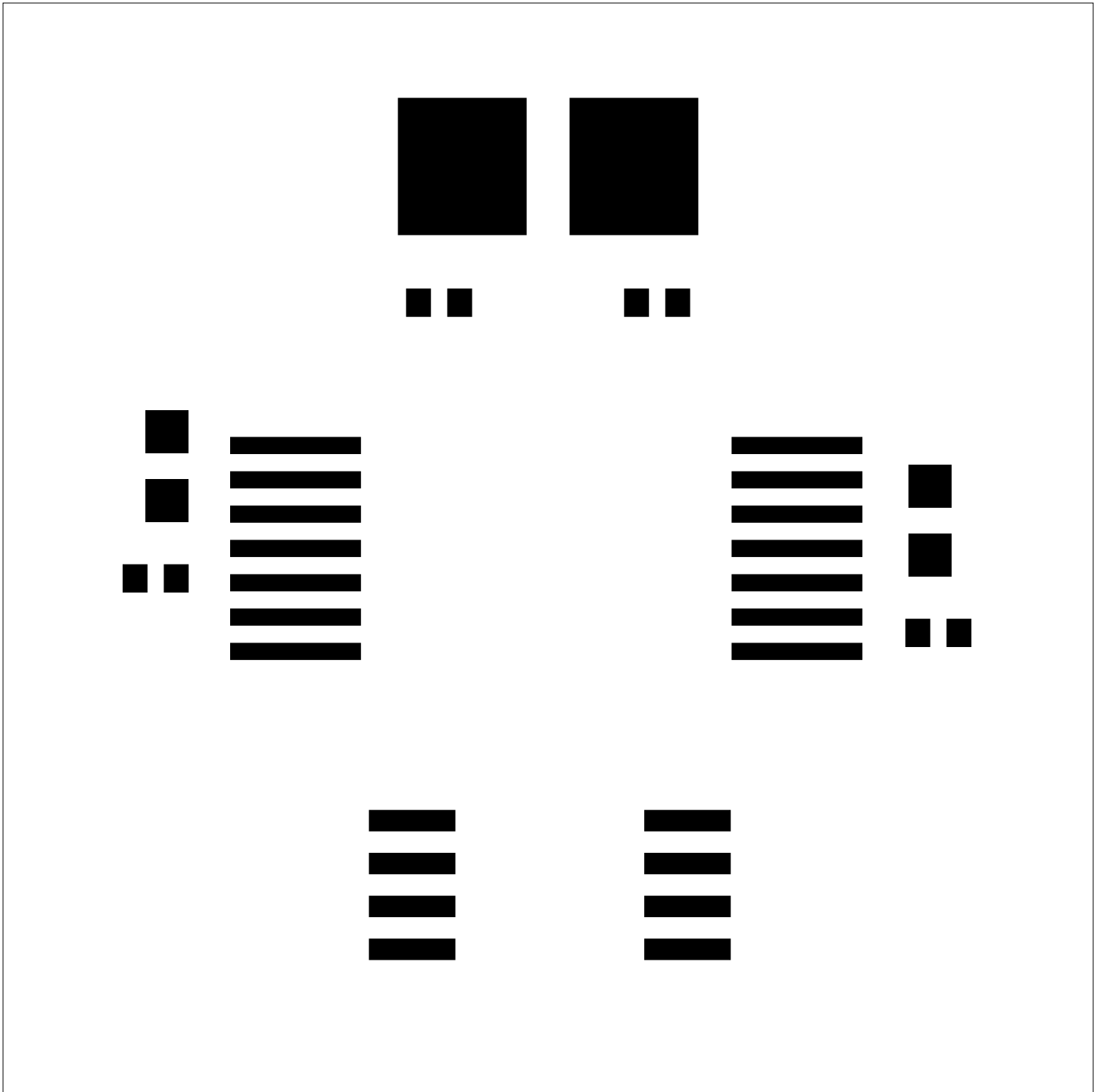




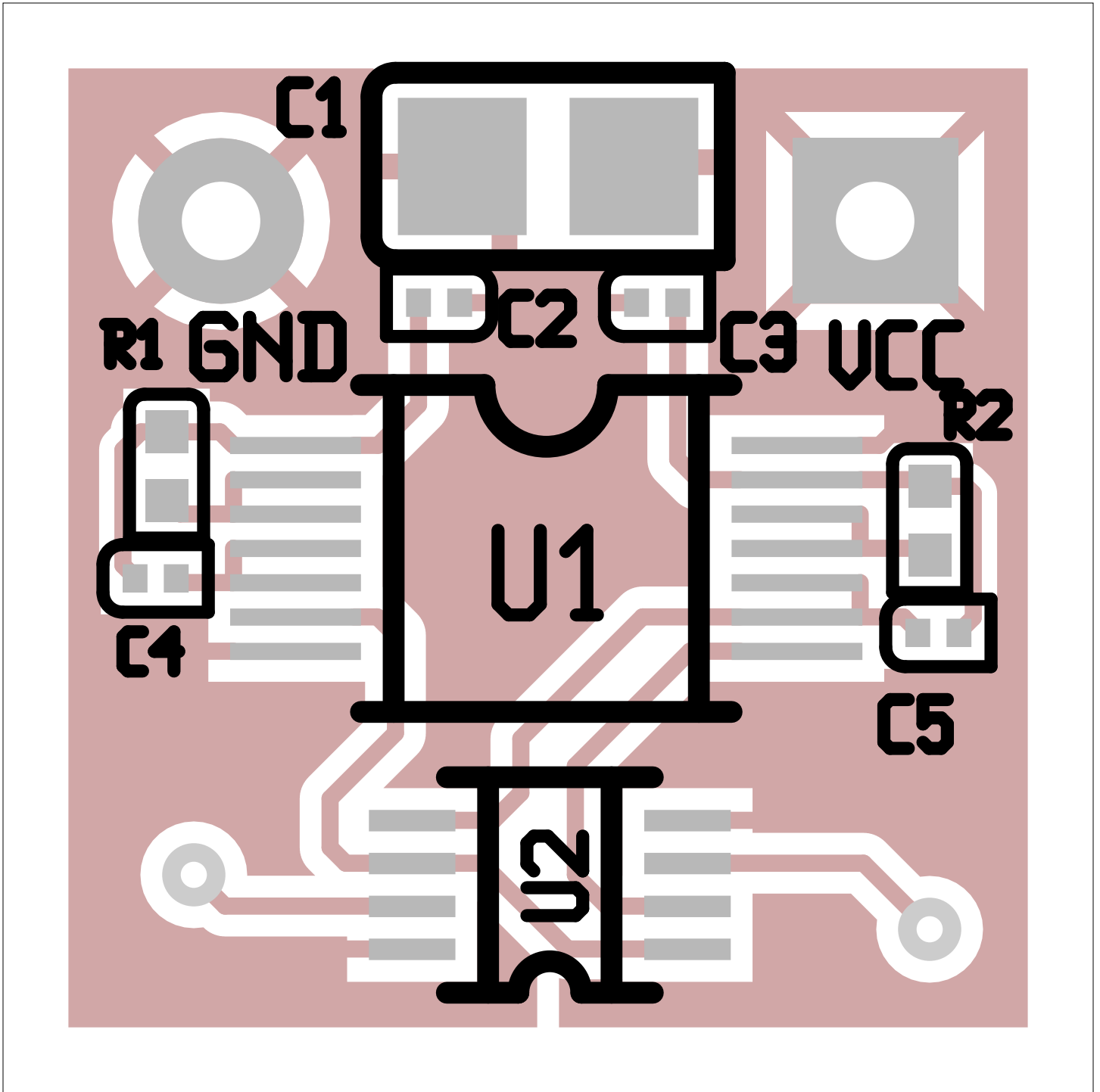


Γαλατσι πορτο

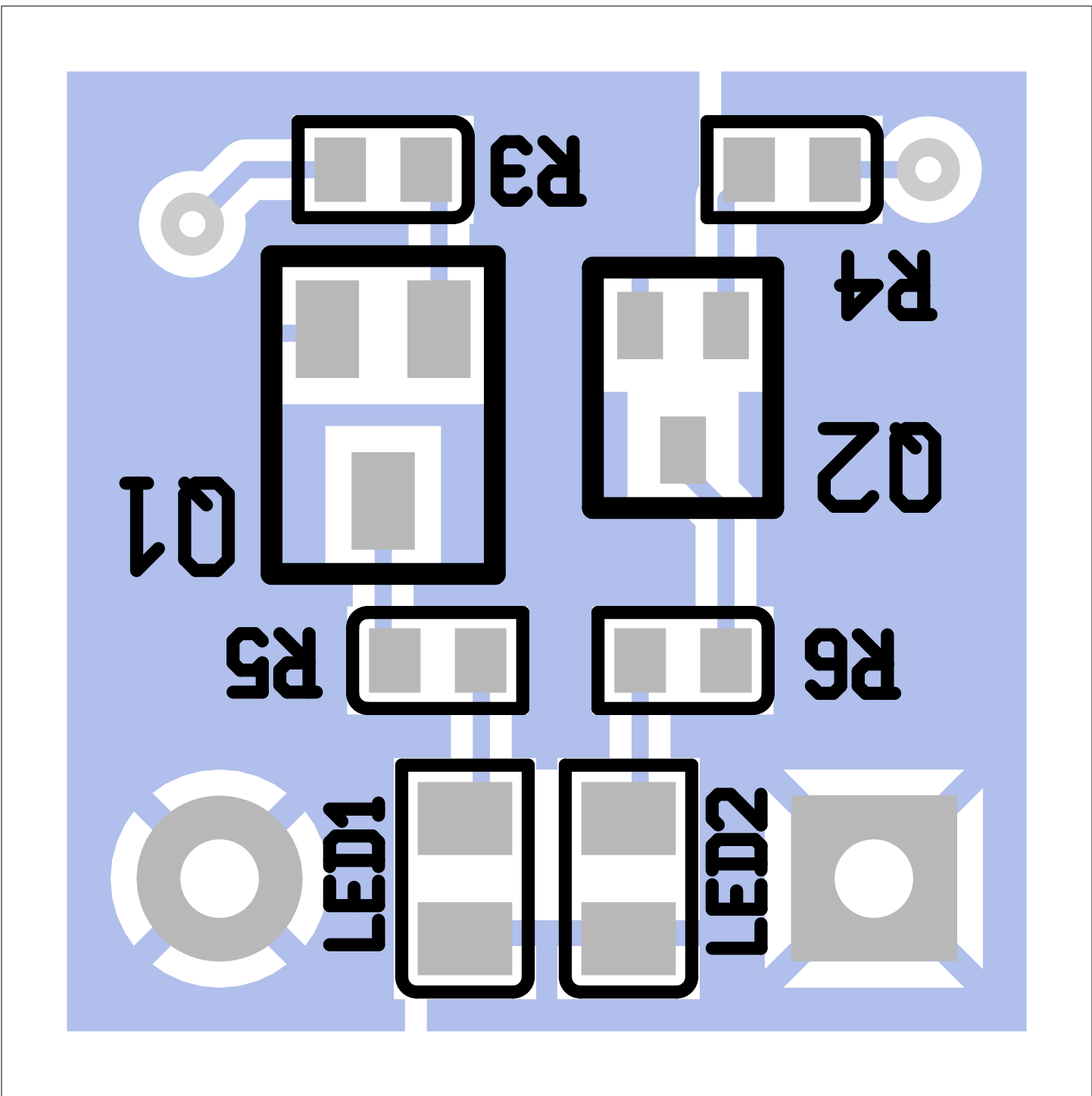
# Day 01 - Toppa



# Layer 01 top pad



# PCB Design



There are 2 different drill sizes used in this layout, 4 holes total

Symbol	Diam. (Inch)	Count	Plated?
γ	<u>0.012</u>	<u>2</u>	<u>YES</u>
+	<u>0.036</u>	<u>2</u>	<u>YES</u>

Title: (unknown) - Fabrication Drawing

Author: DJ Delorie

Date: Fri Oct 20 01:44:59 2006 UTC

Maximum Dimensions: 500 mils wide, 500 mils high



Board outline is the centerline of this 10 mil rectangle - 0,0 to 500,500 mils