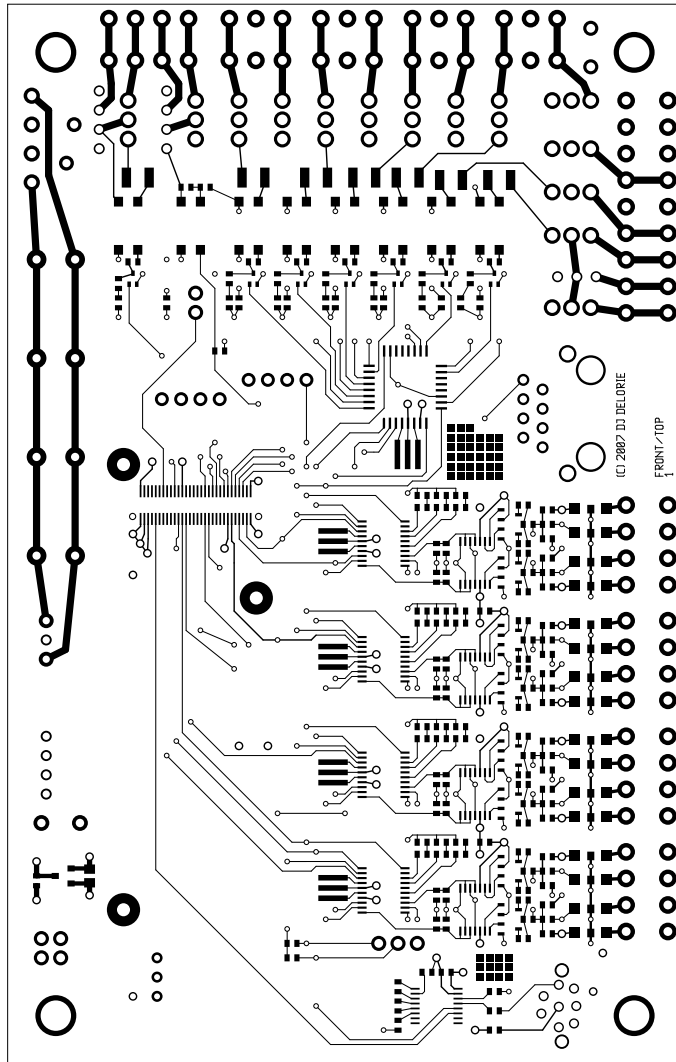
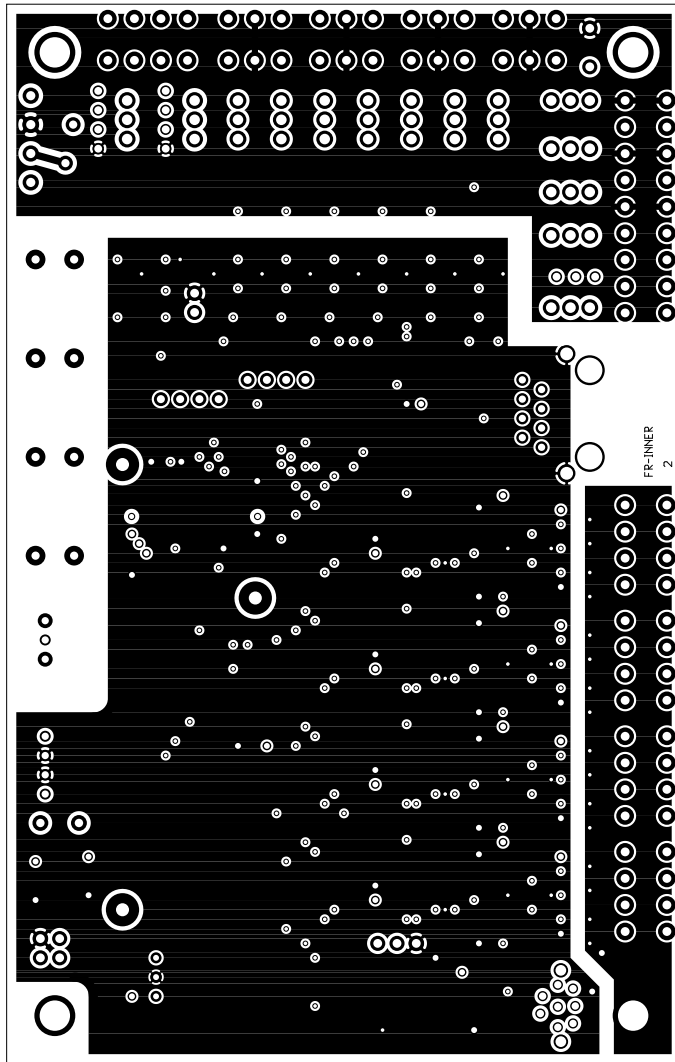
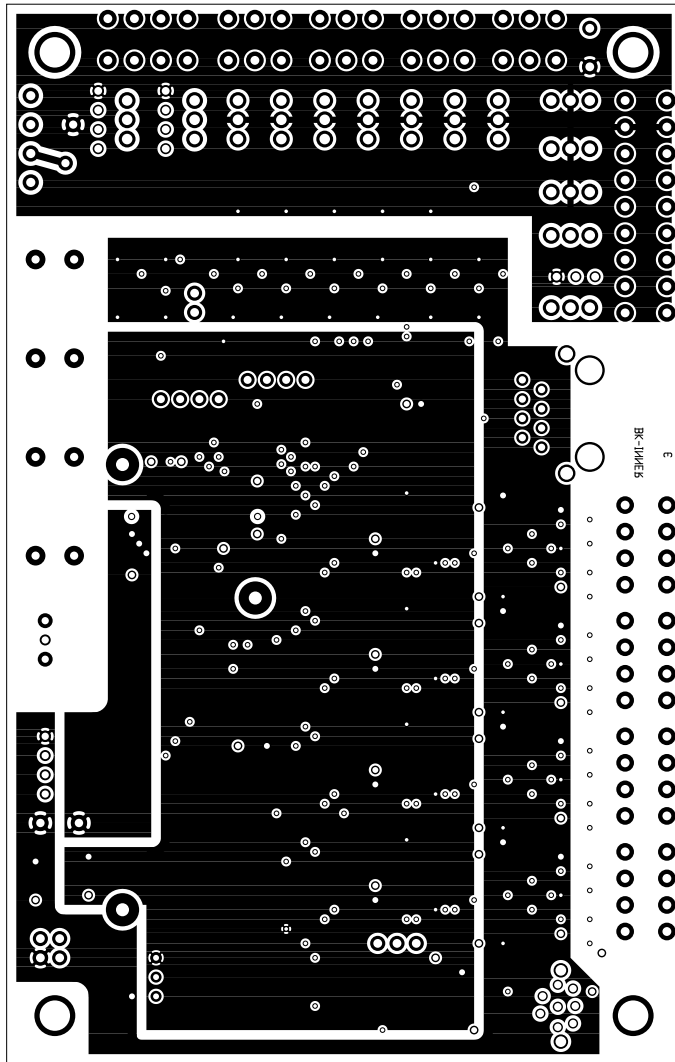


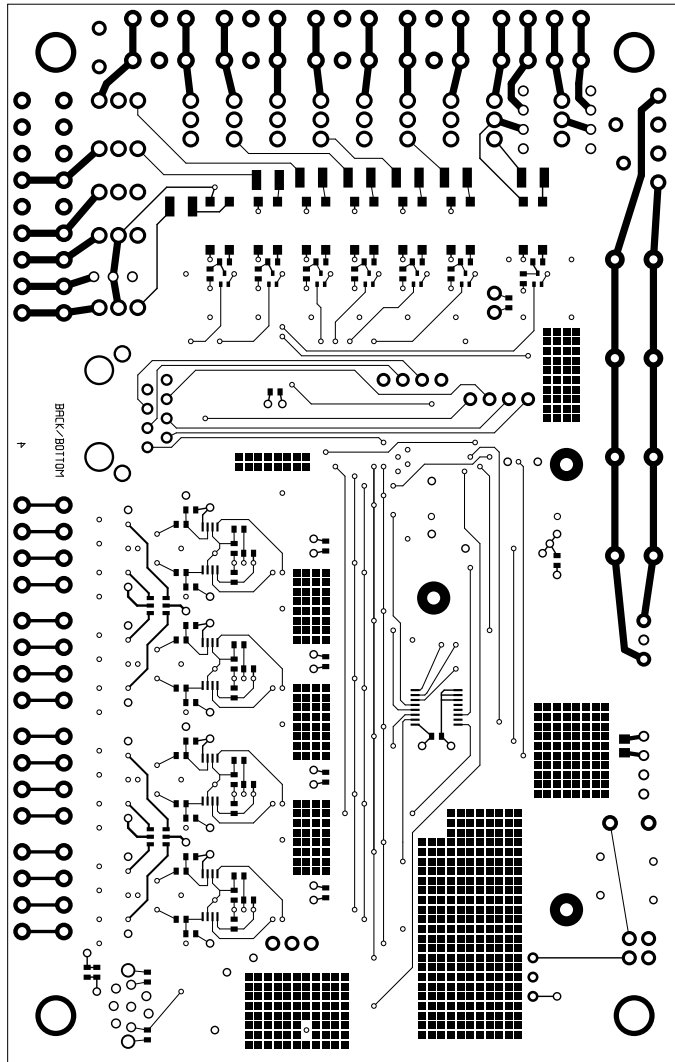
2. front
3. GND
4. Vcc
5. back
6. keepout
7. notes
8. componentmask
9. soldermask
10. plated-drill
11. topsilk
12. bottomsilk
13. bottompaste
14. toppaste
15. topassembly
16. bottomassembly
17. fab



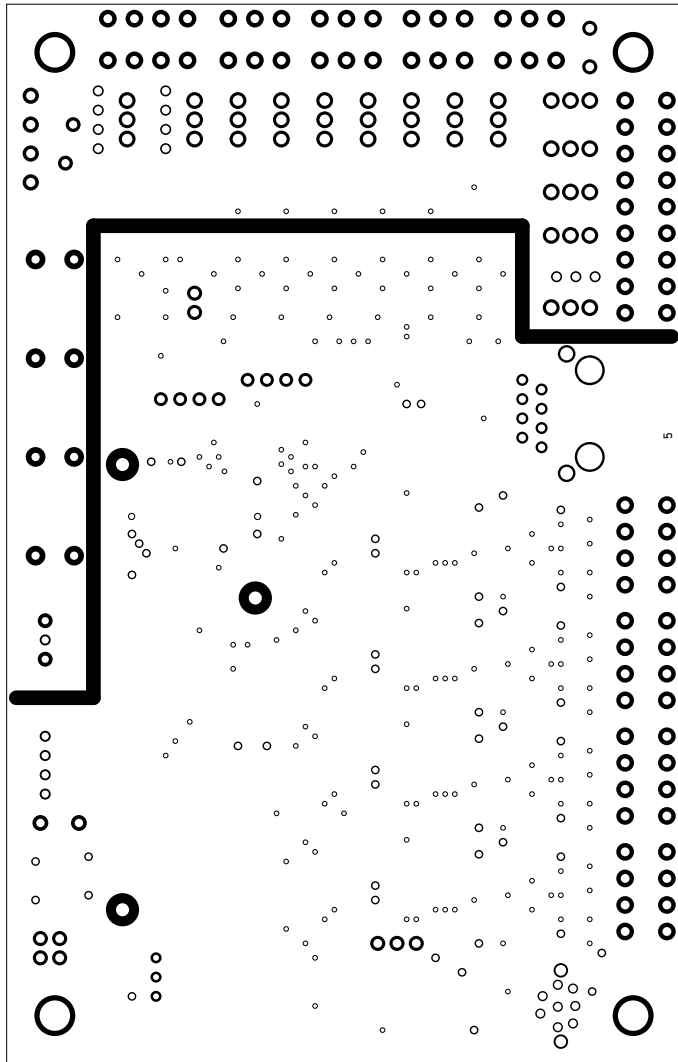
front, scale = 1:1.000
board.pcb

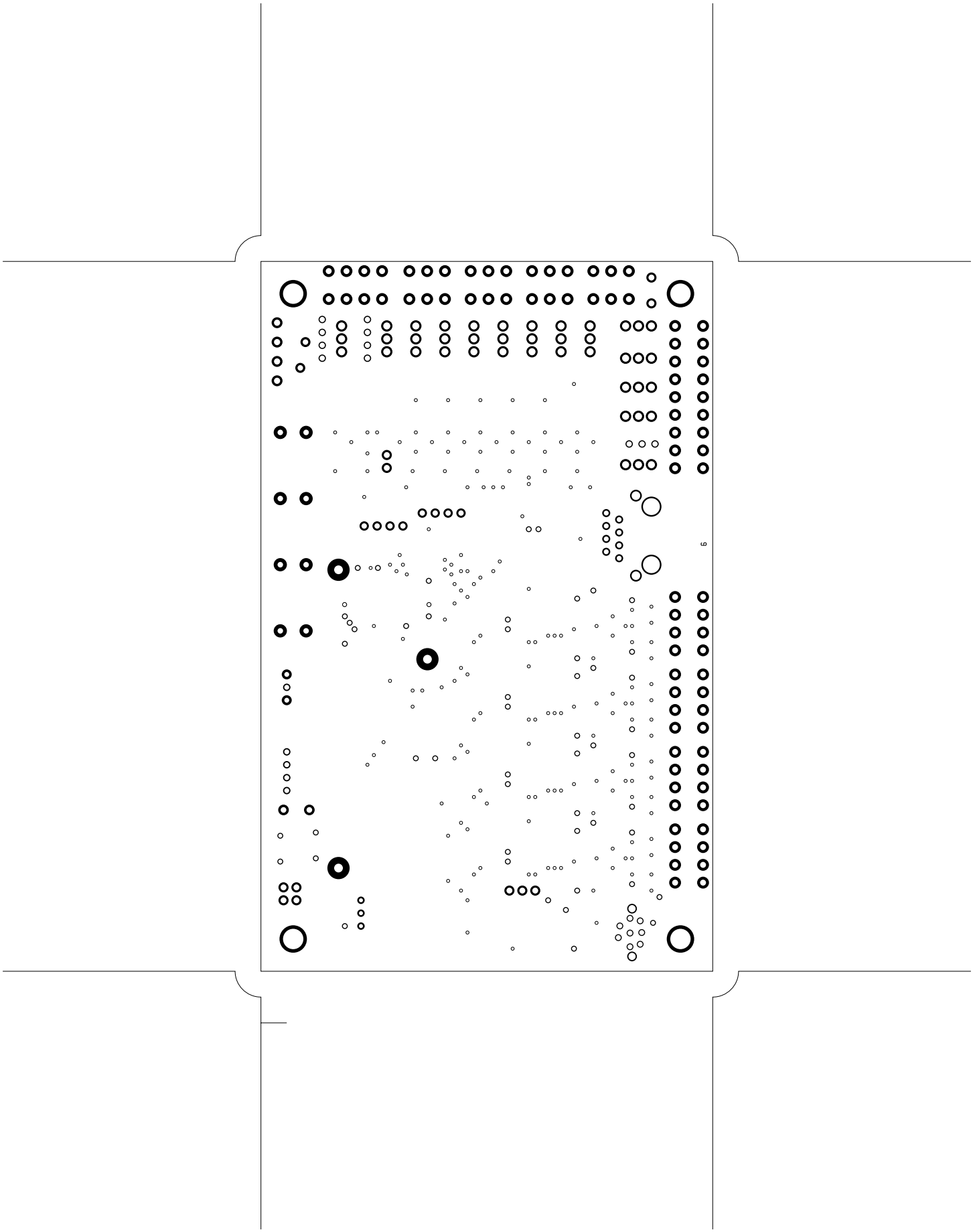


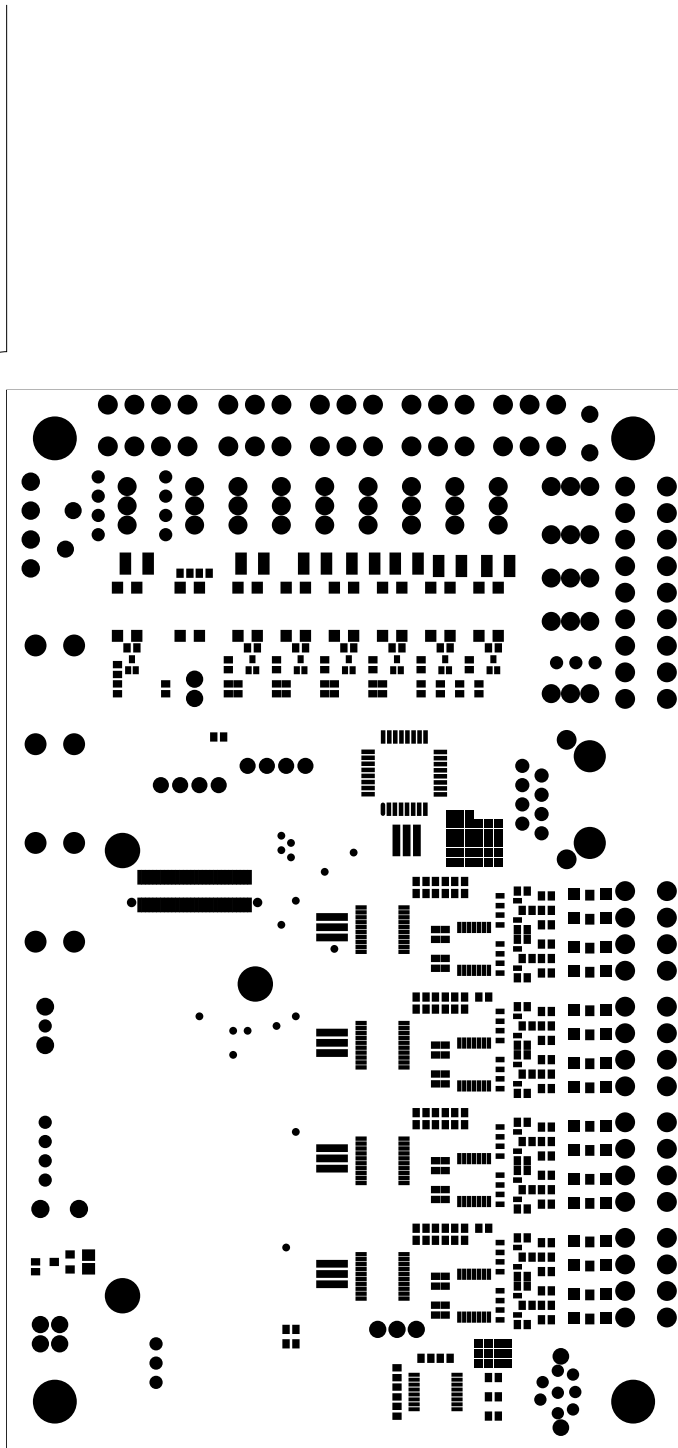


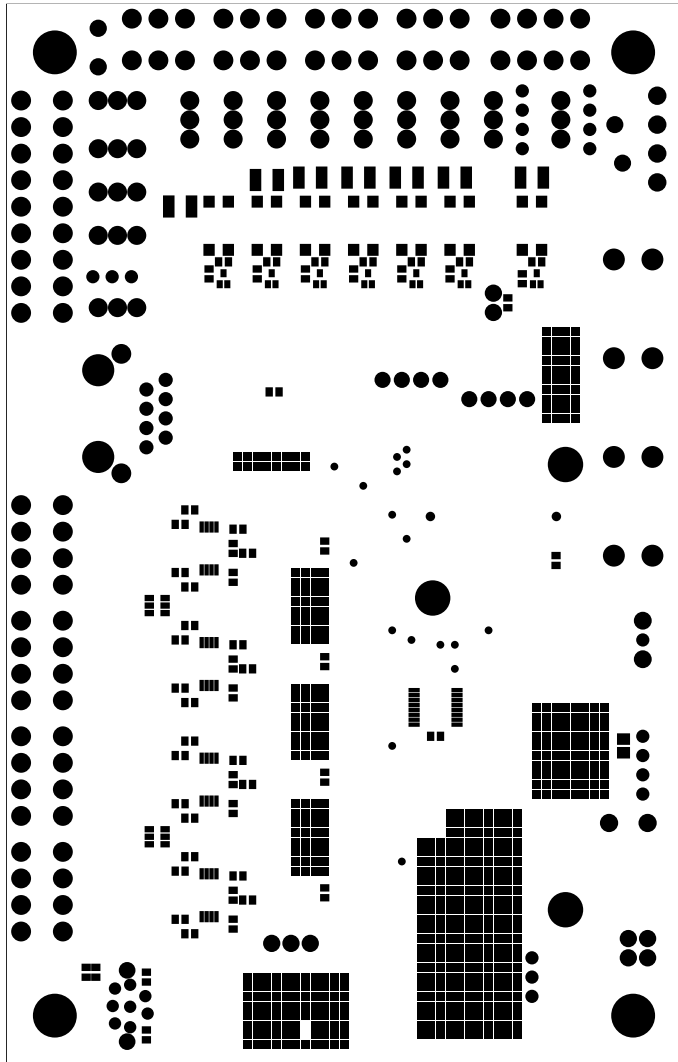


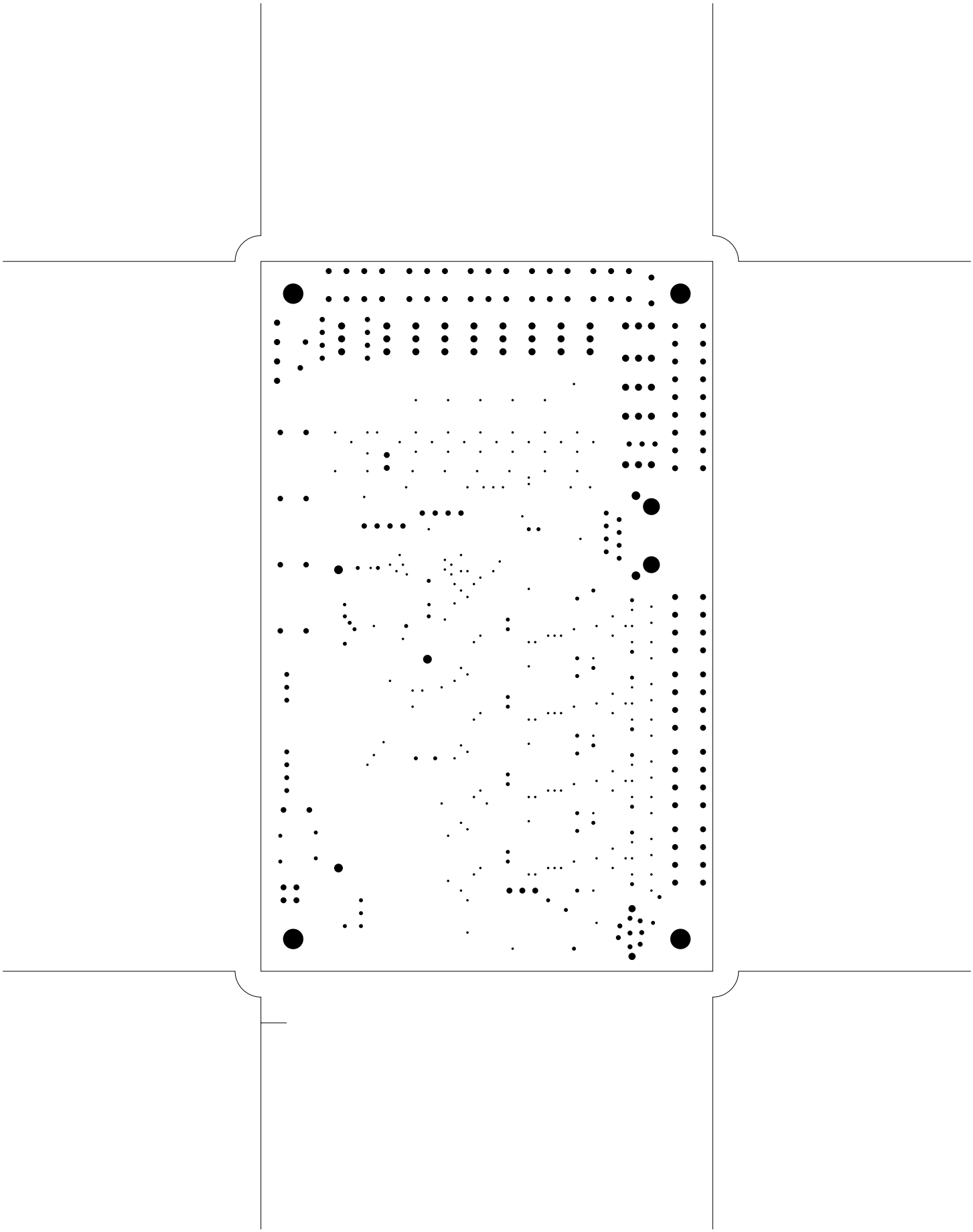
back (mirrored), scale = 1:1.000
board.pcb



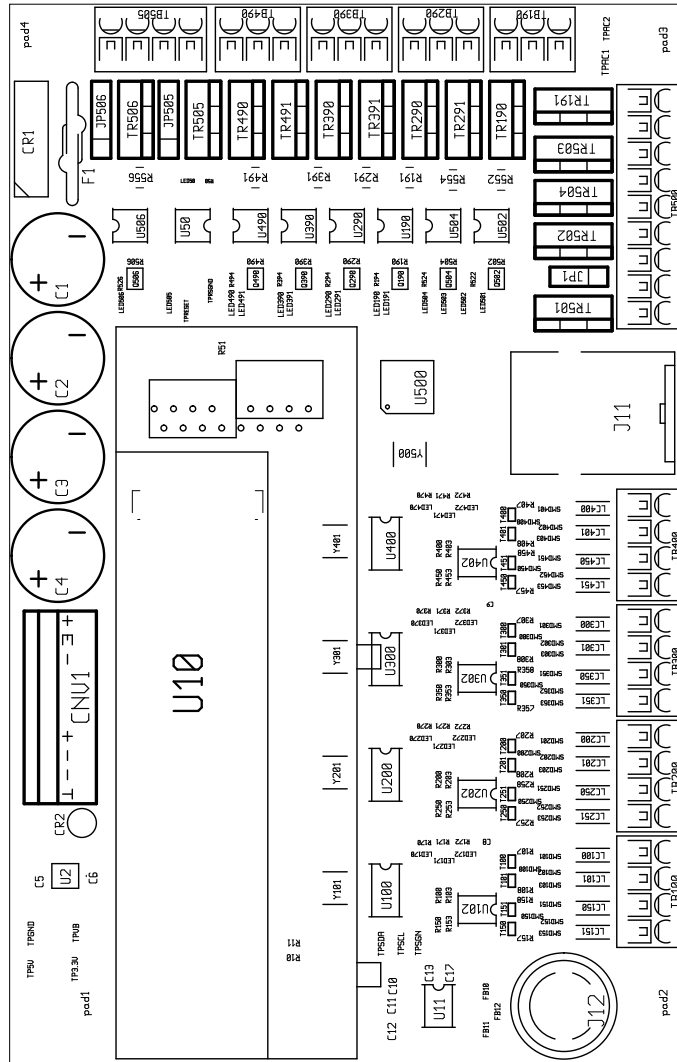


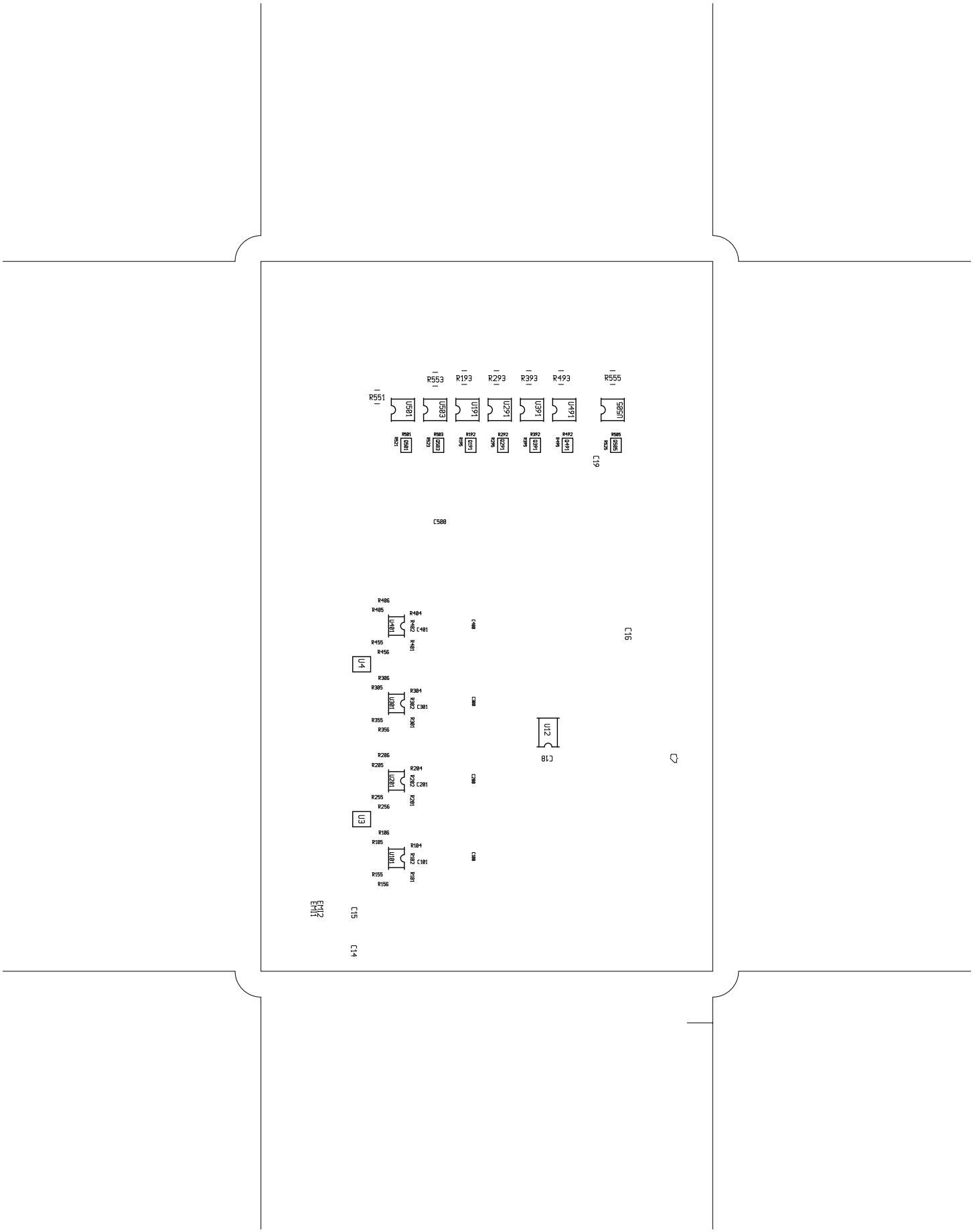




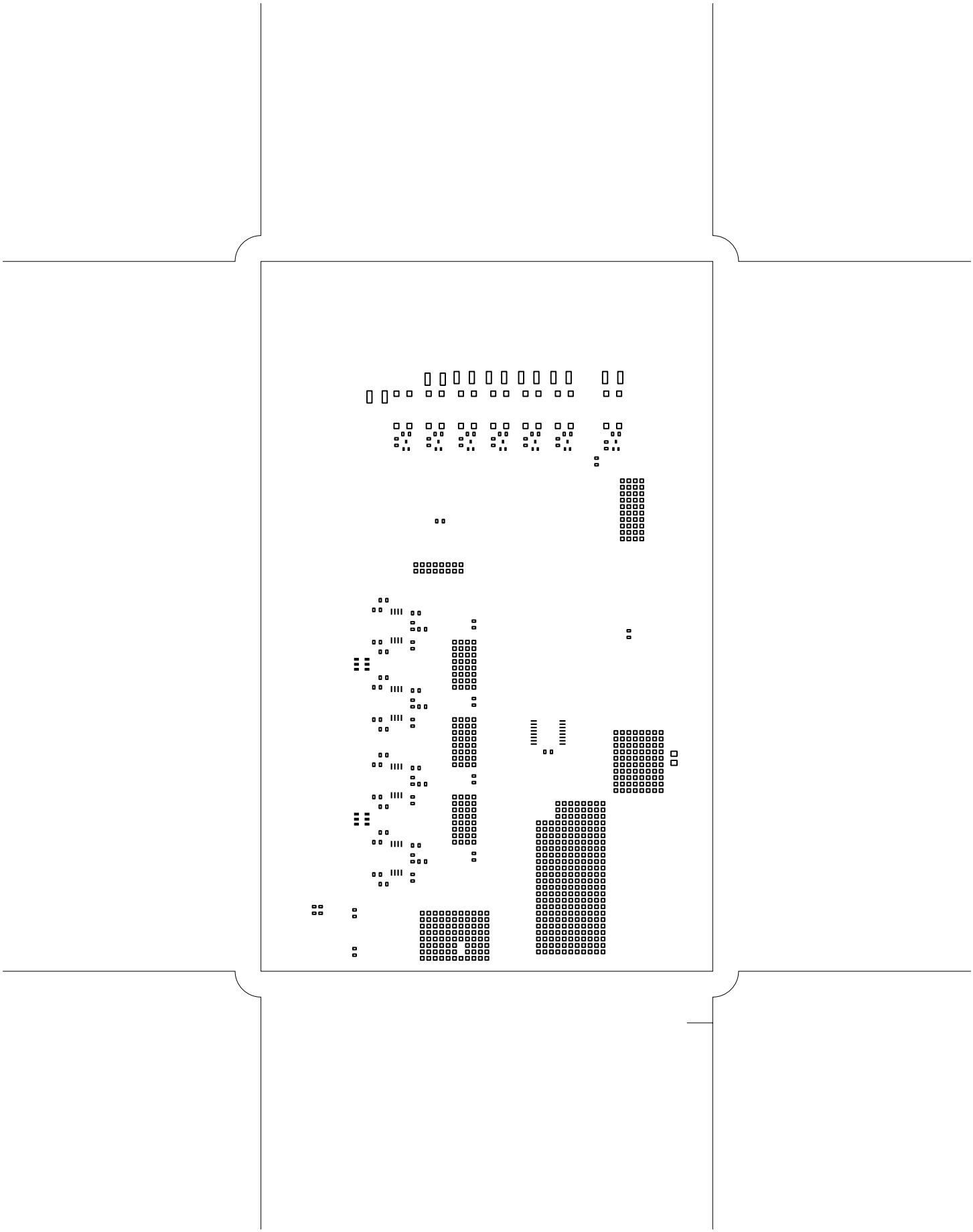


plated-drill, scale = 1:1.000
board.pcb

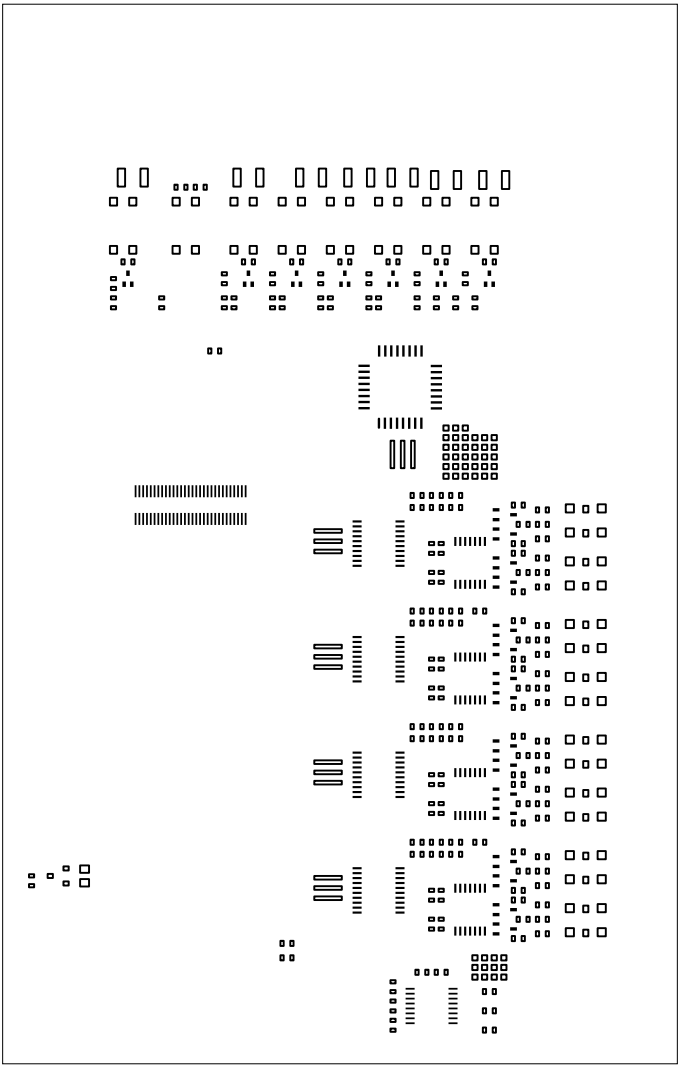


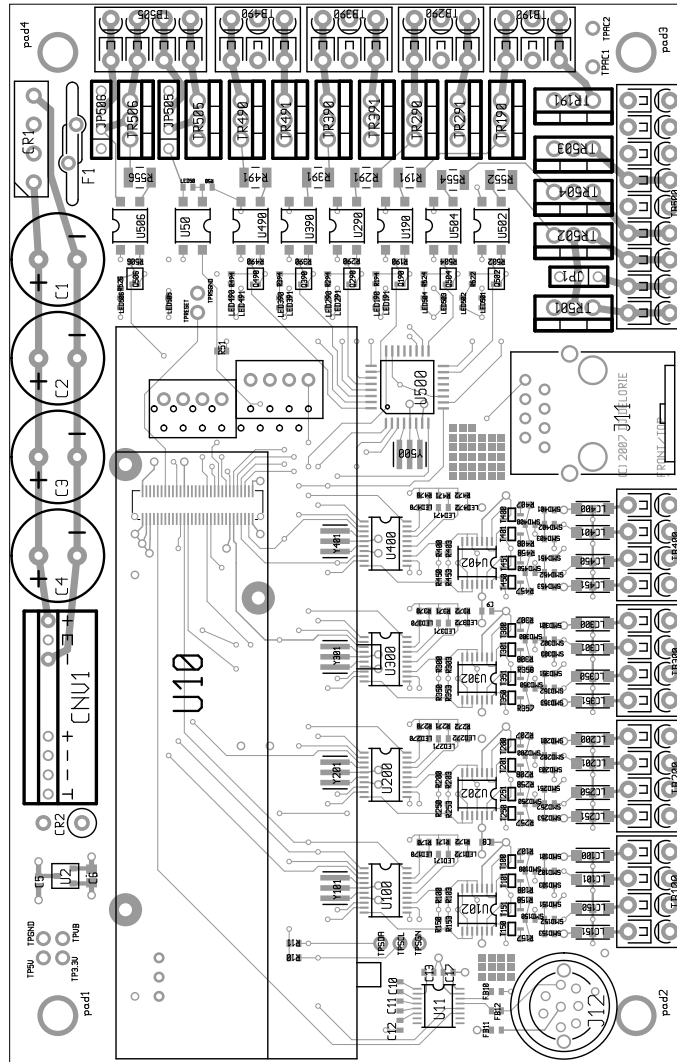


backsilk (mirrored), scale = 1:1.000
board.pcb



backpaste (mirrored), scale = 1:1.000
board.pcb





frontassembly, scale = 1:1.000
board.pcb

There are 16 different drill sizes used in this layout, 446 holes total

Symbol Diam. (Inch) Count Plated?

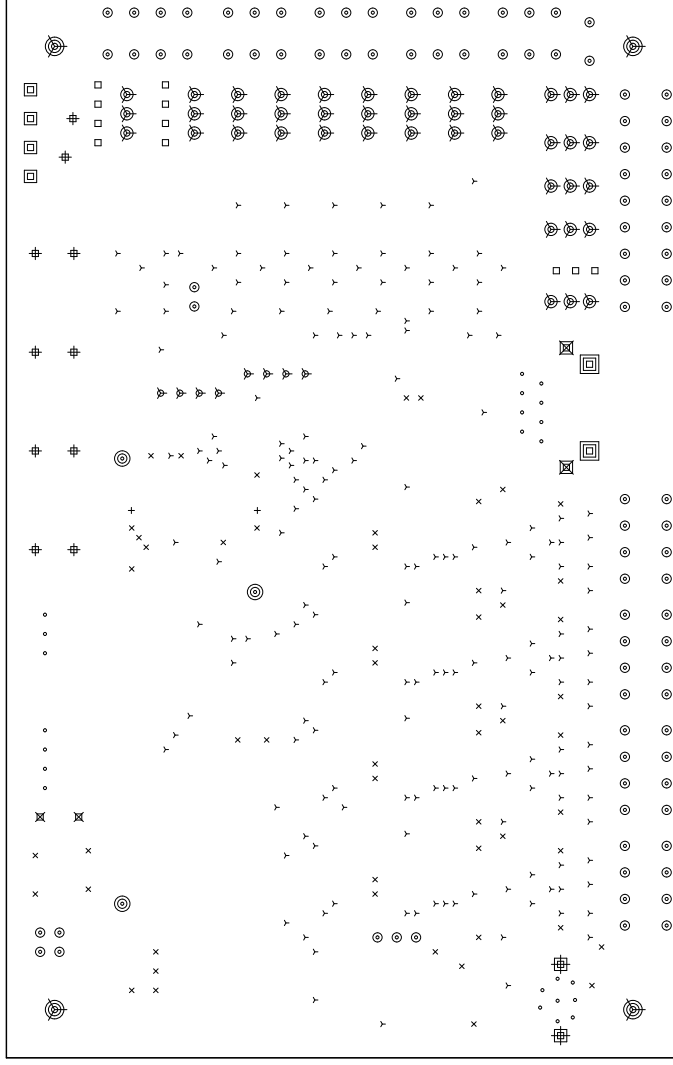
Y	0.016	184	YES
+	0.024	2	YES
x	0.028	54	YES
.	0.035	23	YES
□	0.038	11	YES
▽	0.039	8	YES
⊕	0.040	10	YES
⊗	0.041	2	YES
⊙	0.043	93	YES
□	0.045	4	YES
▽	0.052	42	YES
⊕	0.053	2	YES
⊗	0.064	2	YES
⊙	0.065	3	YES
□	0.128	2	YES
⊕	0.155	4	YES

Title: (unknown) - Fabrication Drawing

Author: DJ Delorie

Date: Thu Nov 29 19:12:36 2007 UTC

Maximum Dimensions: 5500 mils wide, 3500 mils high



Board outline is the centerline of this 10 mil rectangle - 0,0 to 5500,3500 mils